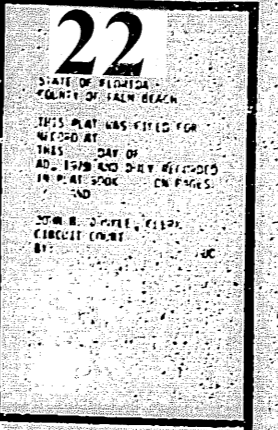
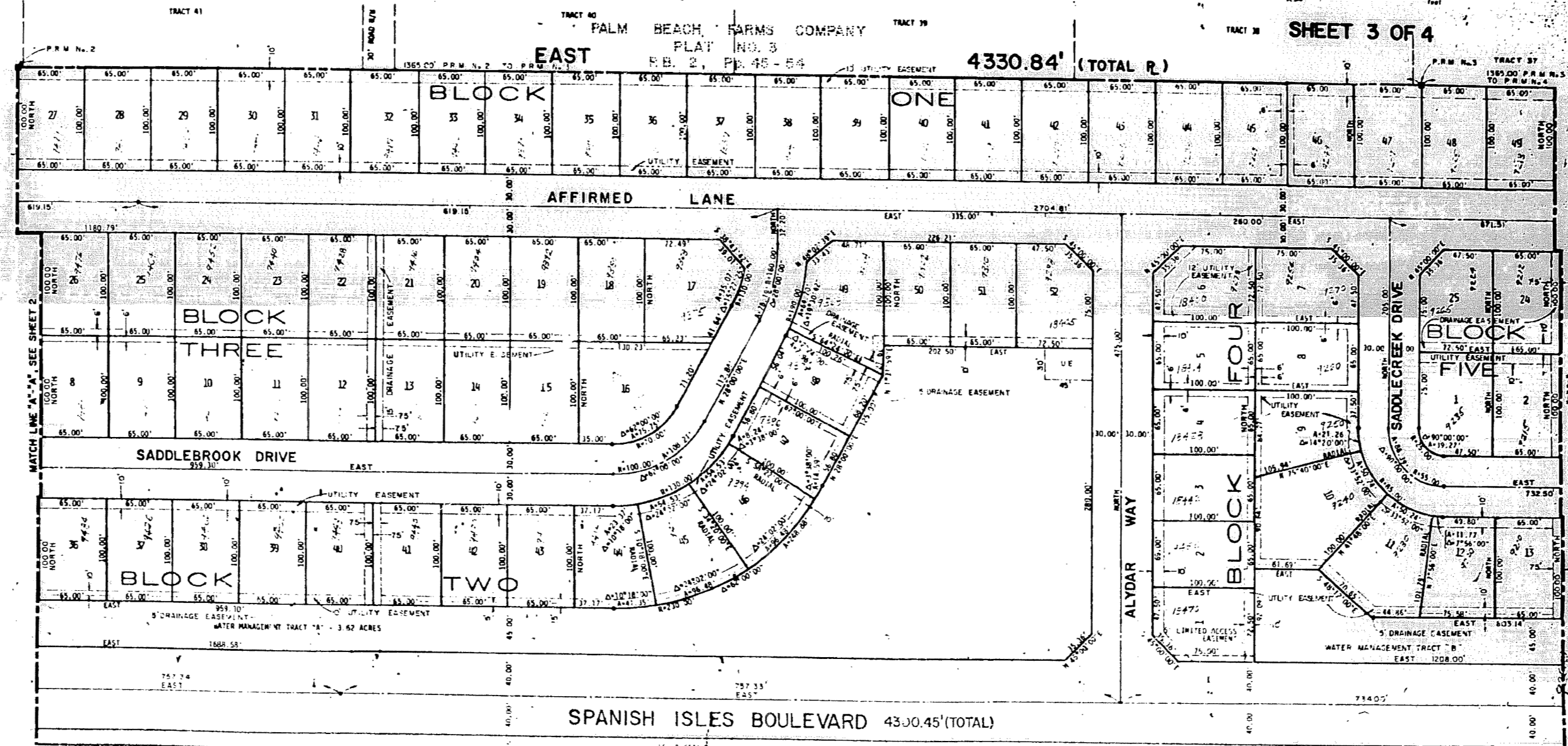


SPANISH ISLES PLAT II

LYING IN SECTION 6, TOWNSHIP 47 SOUTH, RANGE 47 EAST, PALM BEACH COUNTY, FLORIDA
 BEING A REPEAT OF A PORTION OF PALM BEACH FARMS COMPANY PLAT NO. 3, PLAT 2774
 PAGES 45 - 50, INCLUSIVE, AS FOUND AMONG THE PUBLIC RECORDS OF PALM BEACH COUNTY, FLORIDA
 (A CERTAIN 30 FOOT WIDE ROAD RIGHT-OF-WAY THEREIN BEING VACATED
 IN OFFICIAL RECORD BOOK 2909, PAGE 1305)
 MARCH, 1979



22
 STATE OF FLORIDA
 COUNTY OF PALM BEACH
 THIS PLAT WAS FILED FOR
 RECORD AT
 THIS 24th DAY OF
 APRIL 1979 AND DEPOSITED
 IN OFFICIAL RECORD BOOK
 NO. 2909
 PAGE 1305
 BY
 EDW. SURVEYING & MAPPING, INC.
 CERTIFIED ENGINEER
 No. 1111



L1647

WEST 4331.88 (TOTAL R)

LWDD. LATERAL CANAL L-41

PROJ# 0310-300

EDW. SURVEYING & MAPPING, INC.
 1000 S. PALM BEACH BLVD., SUITE 200
 PALM BEACH, FLORIDA 33480
 PHONE: (407) 851-1111
 FAX: (407) 851-1112